



PV INVERTER

Home Series / H5A_222

Product Features

- Built-in power meter / Dry contact / DRM port
- Support dynamic export control function
- Wide input range from 30 to 600 Vdc
- Ultra light weight for easy installation and space-saving
- Built-in Wi-Fi communication via App (iOS/Android)
- MyDeltaSolar cloud for remote monitoring
- Low noise emission with only 20 dB
- IP65 protection

www.deltaww.com

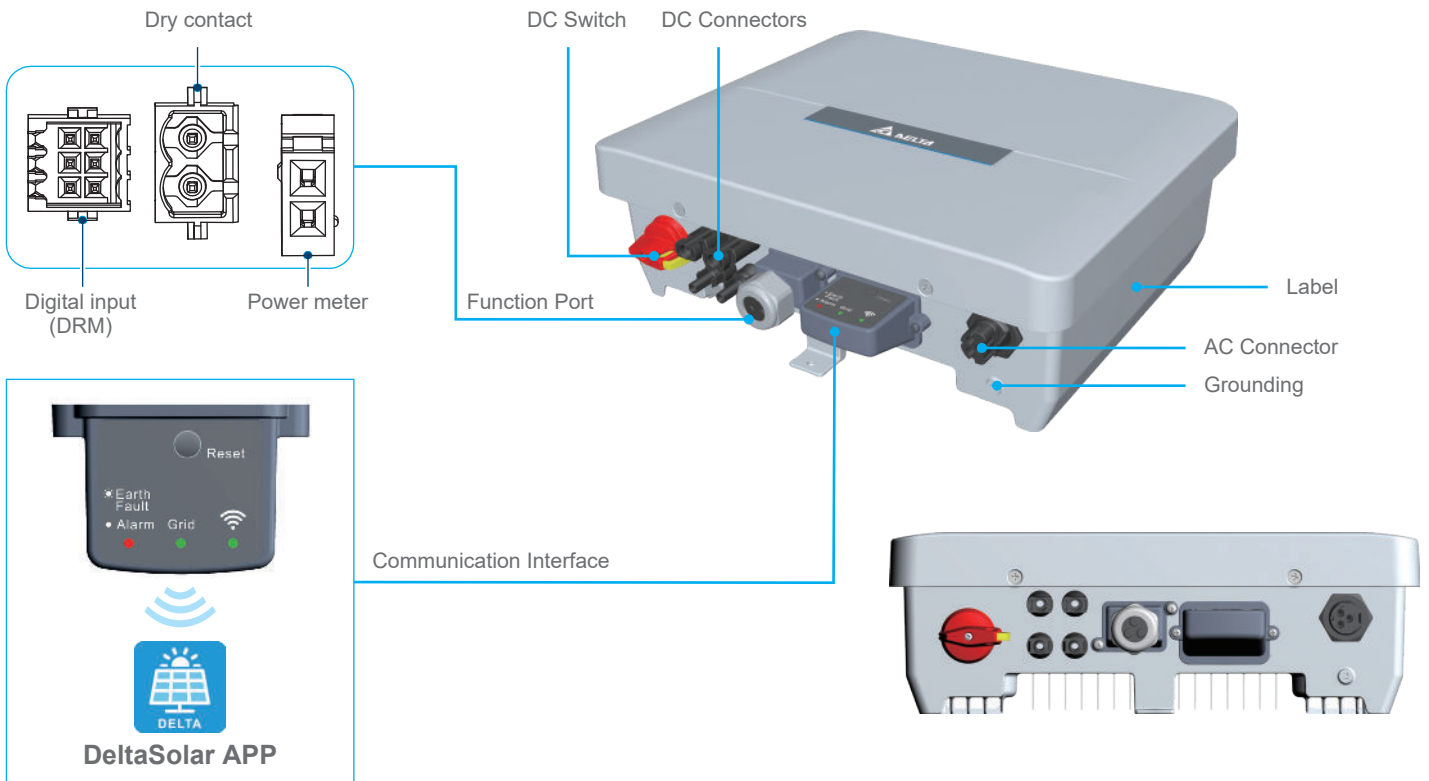


Product Overview

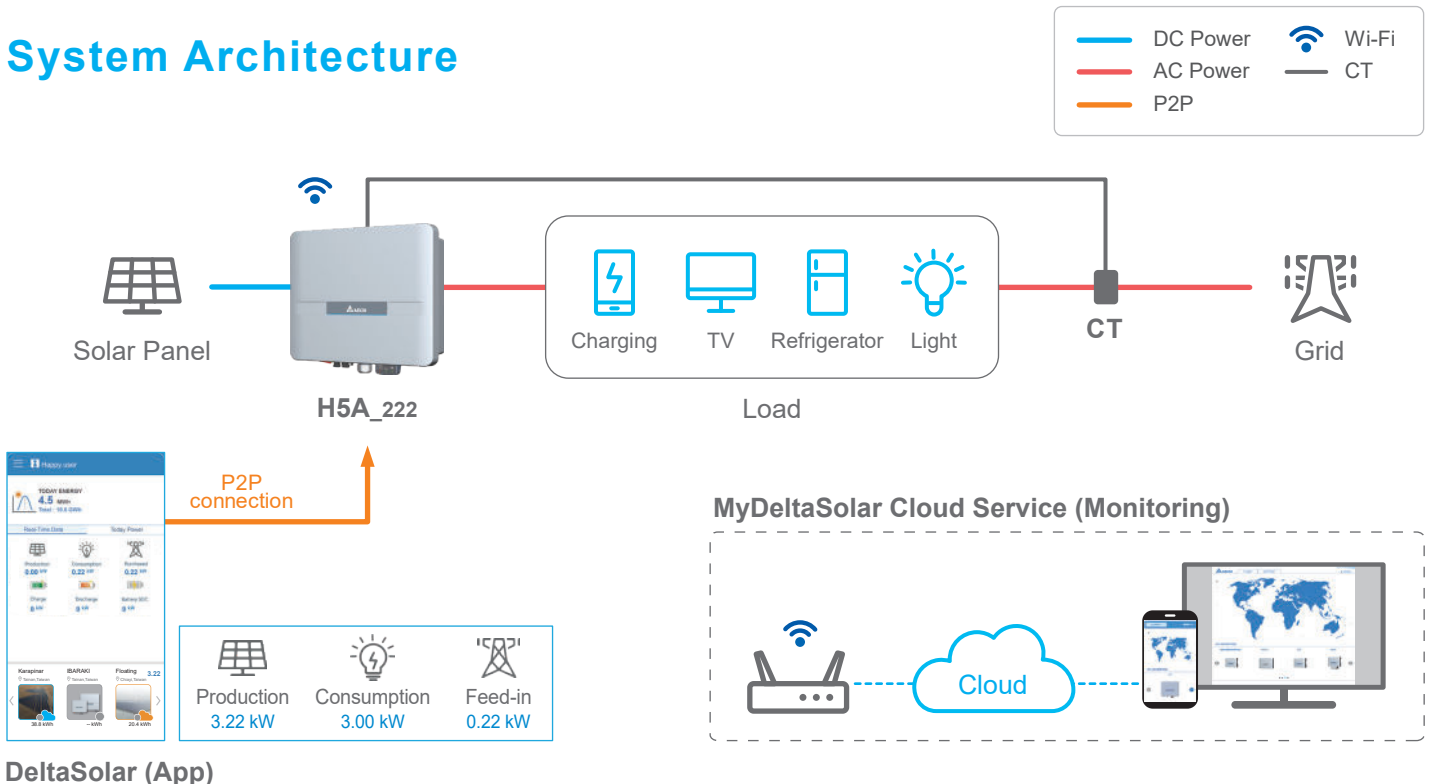
Delta produce H5A_222 solar inverter features a 5.0 kVA power output. This new single phase solar inverter is designed for residential PV applications where maximum versatility and profitability are important. With built-in power meter design to fulfill dynamic power export control requirement and optimize the system cost. From the home screen of MyDeltaSolar APP, user can easily see all the power flow information such as buying and selling power at once.



Form Factor



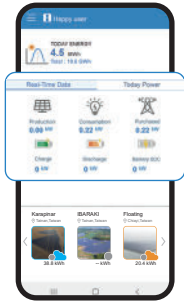
System Architecture



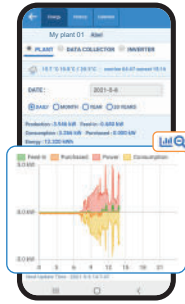
DeltaSolar (App)

APP & Cloud

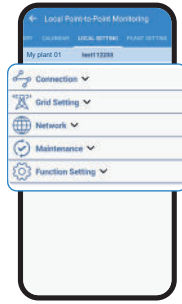
Only need one Wi-fi router to enjoy Delta cloud service.



Real-Time Data



Data Curve



Function Setting



DeltaSolar
DELTA ELECTRONICS, INC.



MyDeltaSolar Cloud



Specifications

Model Number	H5A_222					
DC Input						
Max. Input Voltage	600 V					
Operating Voltage Range	30 - 550 V					
MPP Voltage with Max. Power	240 - 500 V					
Start Up Voltage	> 35 V					
Rated Voltage	350 V					
Max. Input Current	11Adc for each / 22Adc for total					
Max. Input Power	6600 W					
Max. short circuit current per MPPT	20 A					
Mpp Tracker	2					
Connection Type	H4, 2 pairs					
DC Switch	Built-in					
AC Output						
Nominal output power	5000 VA					
Max. Output Power	5000 VA					
Nominal output current	21.7 A					
Max. Output Current	23 A					
Rated Voltage	220 / 230 V					
AC Voltage Range	180 - 280 V					
Frequency Range	50 / 60 Hz (± 5 Hz)					
T.H.D	< 3%					
Reactive Power	0.8 Ind ~ 0.8 Cap					
Night Time Power Consumption	< 2W					
Efficiency						
Peak Efficiency	97.5 %					
Euro Efficiency	96.8 %					
Information						
Power Meter	Built-in					
Communication	Wi-Fi					
Indicator	LED					
Display / Cloud	DeltaSolar APP (iOS / Android) / MyDeltaSolar Cloud					
Alarm	Mail Notification					
Certification						
	AS4777.2:2020	EN 61000-6-2	EN 61000-6-3	IEC 61683	IEC62116	IEC61727
General Data						
Operating Temp. Range	-25 to +60°C, full power up to 40°C					
Protection Level / Noise	IP65 / 20 dB (A)					
Operating Elevation	< 2000 m					
Cooling	Natural cooling					
Dimensions (W × H × D) / Weight	380 x 318 x 130 mm / 12 kg					
Country of manufacturer	China					

*All specifications are subject to change without prior notice



Delta Electronics, Inc.

39 Section 2 Huandong Road, Shanhua District,
Tainan City 74144, Taiwan, R.O.C.

TEL : +886 6 505-6565

FAX : +886 6 505-1919

info@deltaww.com